

BraceBolt™

SYSTEM COMPLIANT CONCRETE PANEL BRACING ANCHOR & BOLT



GRADE 8.8
RATED TO WLL 22KN
(2.2 TONNE)

TESTED TO AS 3850-2003,
ALL STATE & NATIONAL
CODES OF PRACTICE



BraceBolt™ WHEN SAFETY AND
COMPLIANCE ON SITE MATTER



TAMPER RESISTANT BRACE SECURING SYSTEM

PRECAST AND TILT-UP CONCRETE PANEL BRACING ANCHORING

BraceBolt complies with the new National Code of Practice For Precast, Tilt-up and Concrete Elements in Building Construction. Reduces the risk of unauthorized brace removal.

Key benefits when using BraceBolt system are:

- Easy installation
- High pull out strength
- Designed for 20 MPa concrete
- Clearly defined system approach
- Specially developed for the Precast & Tilt-up industry

Domed Socket Head: requires 14mm allen key drive, which reduces unauthorized removal (lockout tagout system), Grade & manufactures ID clearly marked for quick and easy validation.

Integrated forged 38mm washer with locking serrations: forming part of the domed socket head to reduce the likelihood of undoing under cyclic loading. Washer sized to fit the safety foot. Bolt tensional loads are distributed correctly into the brace foot.

Uses the standard 20mm drill bit: designed to sustain the high shear loads from wind induced cyclic loading

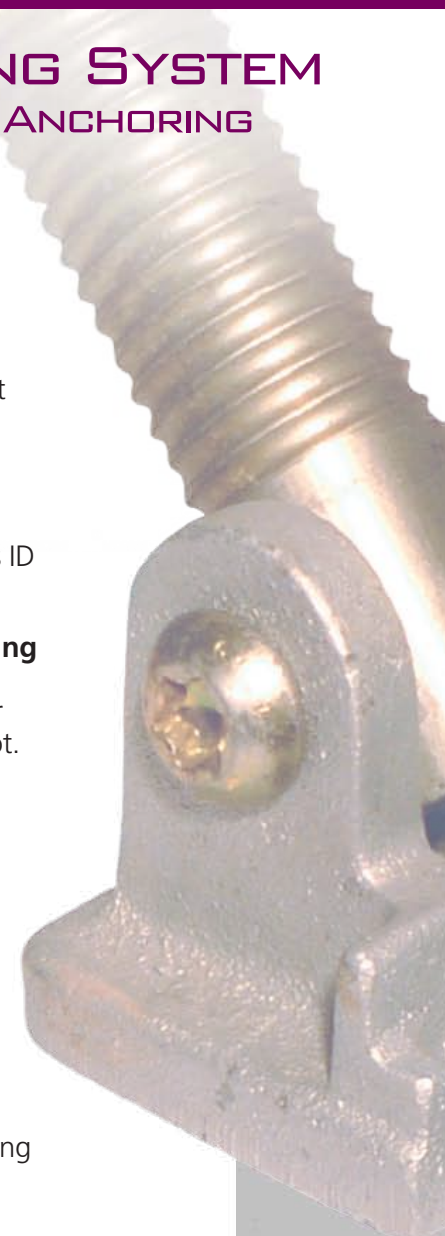
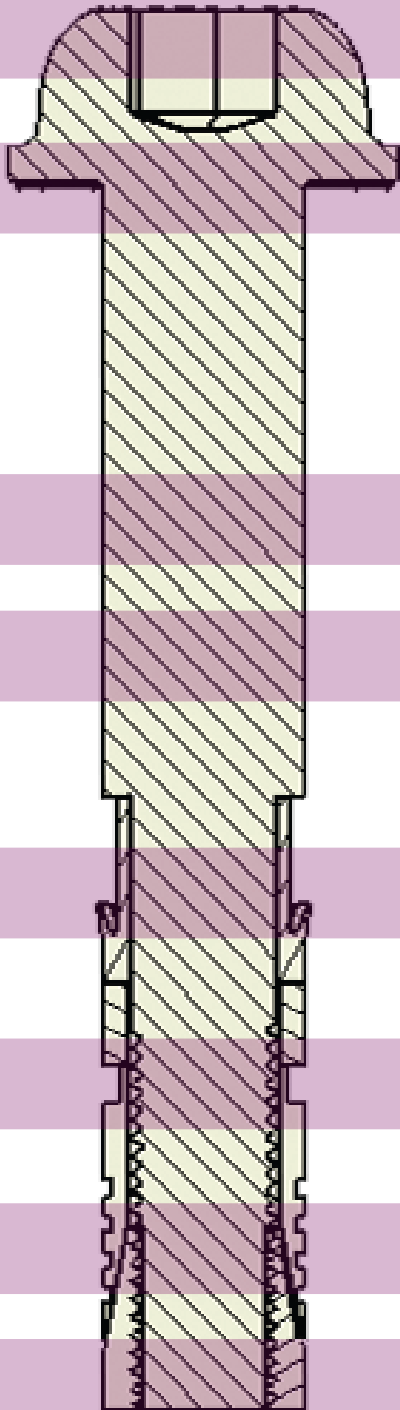
Solid 20mm Spigot: designed to sustain the high shear loads from wind induced cyclic loading

Patented "Sprag Locking Mechanism": with inbuilt crushable zone for increasing pull down forces

Four Ribbed Precision Machined Expansion Sleeve: for a positive engagement with the surrounding concrete

Patented "Expansion Sleeve Locking Mechanism": the key to obtaining "Greater Shear Cone Strength" 62kN Ultimate Load

High Grade Steel Cone Nut: Produces the high radial forces which all add up to a rated anchoring system that closely matches brace capacity

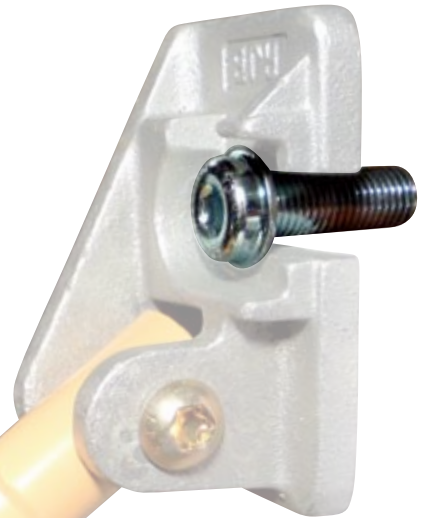
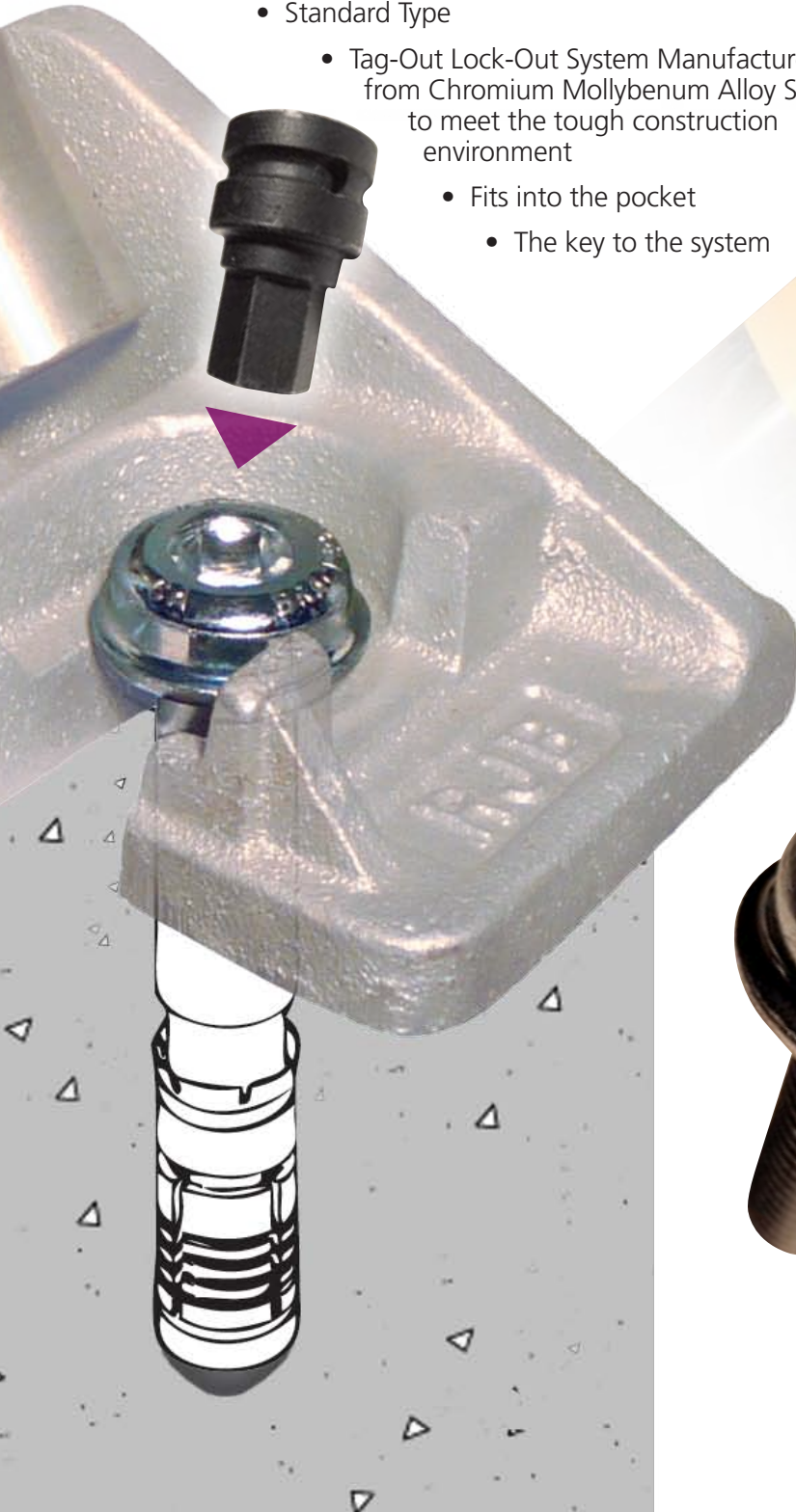


SPECIALLY DESIGNED AND DEVELOPED FOR PRE-CAST AND ON-SITE CONCRETE PANEL BRACING

The BraceBolt System is the only system that complies with RJB Industries Safety Brace System 'SBS' in meeting all their 'safety requirements'

New 14mm Hex Drive Adaptor:

- Standard Type
- Tag-Out Lock-Out System Manufactured from Chromium Molybdenum Alloy Steel to meet the tough construction environment
 - Fits into the pocket
 - The key to the system



Intergrated Serration Washer:
as per AS3850 para 2.4.1 and C2.4.1



GRADE 8.8 FLANGED BOLT

- Domed flange head
- 14mm Hex Drive for tamper resistance
- Full M20 x 2.5 thread
- Gal Plated



OH&S WARNING NOTES

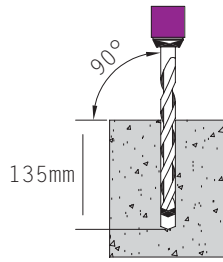
Before installation, the following conditions must be met:

- Refer to Bracing Plan on site and bracing requirements
- Minimum concrete strength of 20MPa must be achieved
- Anchors spacing to have a minimum distance of 250mm all around
- Minimum edge distance 250mm
- Use Safety Equipment – eye protection, ear protection and face mask

BRACE BASE DETAIL

DRILL

Drill a diameter 20mm hole, perpendicular (90°) to the face and to a minimum depth of 135mm

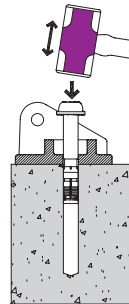


CLEAN

Remove dust and debris from inside of hole and around the lip to obtain a flat, clean surface for the brace foot

INSTALLATION

Place brace foot over drilled hole
Insert BraceBolt through brace foot and into drilled hole
Drive home BraceBolt with hammer
Ensure BraceBolt integrated flange makes contact with brace foot and is full home



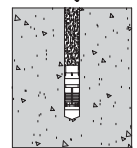
TORQUE SETTINGS

Use the rated tagout – lockout 14mm Hex drive socket and using tension wench or load control equipment apply a torque of 150Nm to set



REMOVAL

Use the rated tagout – lockout 14mm hex drive socket to remove BraceBolt
Fill hole with grout and level off



*OHS Warning

Before any braces are removed the Concrete Element must be checked for fixture into the building structure and the site control officer has signed off

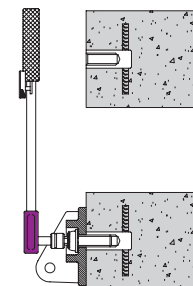
CONCRETE PANEL DETAIL

FERRULE

Insure ferrule is rated and complies with AS 3850 and is fitted with a cross bar

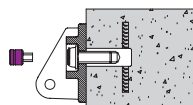
TORQUE SETTING

Use the rated tagout – lockout 14mm Hex drive socket with a tension wench or load control equipment and apply a torque of 100Nm



REMOVAL

Use the rated Tagout – Lockout 14mm hex drive socket to remove BraceBolt
Slide brace foot away
Fill hole with grout and level off or use a Patching Plug



DISTRIBUTOR

